



## USE PUBLIC TRANSIT AND DISCOVER MONTRÉAL

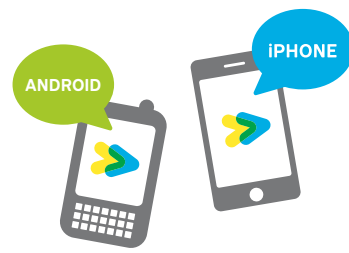
Unlimited travel on STM bus and métro networks.

1-day pass • 24 hrs	\$10
Unlimited Weekend From 6 p.m. Friday to 5 a.m. Monday	\$13
3-day • 3 consecutive days	\$18
Weekly CAM from Monday to Sunday. Available on OPUS card only.	\$24.50

From downtown, you can reach the lookout atop Mount Royal, the Old Montréal district or the Casino in no time at all.

	11 De la Montagne
	715 Vieux-Port/Vieux-Montréal
	777 Casino

For details: [stm.info](http://stm.info)



## ALL THE INFORMATION YOU NEED

Download STM's free mobile application or visit [stm.info](http://stm.info).



## THESE HOTELS AND MÉTRO STATIONS ARE CLOSE TO 747 BUS STOPS, MAKING YOUR DESTINATION EASIER TO REACH

- 1** Lionel-Groulx métro station  
Auberge de jeunesse HI-Montréal  
Days Hotel and Conference Centre Montreal  
Hôtel Espresso Montréal  
Centre-ville / Downtown  
Hôtel du Fort  
Le Nouvel Hôtel & Spa  
Quality Inn Downtown
- 2** Best Western Plus Montréal centre-ville  
Hôtel Europa  
Hôtel de la Montagne  
Hôtel Le Crystal  
Le Centre Sheraton Montréal Hotel  
Leows Hôtel Vogue  
Novotel Montréal Centre
- 3** Best Western Ville-Marie Hôtel & Suites  
Hôtel Le Cantlie Suites  
Montréal Marriott Château Champlain  
Marriott Residence Inn Downtown Montréal  
Sofitel Montréal Golden Mile
- 4** Fairmont Le Reine Elizabeth  
Hôtel Le Germain Montréal  
Hilton Montréal Bonaventure  
Hôtel Omni Mont-Royal
- 5** Delta Montréal  
Le Square Phillips Hôtel & Suites  
W Montréal
- 6** Embassy Suites Montréal  
Hôtel 262  
Holiday Inn Select Montréal Centre-Ville  
Hôtel Embassy Suites - Montréal  
Hôtel Hilton Garden Inn Montréal Centre-ville  
Hôtel La Tour Centre-Ville  
Hôtel Le Dauphin Montréal Centre-Ville  
Hôtel Le St-James  
Hyatt Regency Montréal  
InterContinental Montréal  
Le Westin Montréal
- 7** Abri du Voyageur Hôtel  
Hôtel Travelodge Montréal Centre  
Hôtel Villa  
Hôtel ZERO1  
Marriott SpringHill Suites Vieux-Montréal  
Place d'Armes Hôtel & Suites
- 8** Candlewood Suites Montréal  
Days Inn Montréal Centre-ville  
Holiday Inn Express Hotel & Suites Montreal  
Centre-Ville
- 9** Auberge City Glamour  
Hôtel Champ-de-Mars  
Hôtel Gouverneur Montréal  
Place Dupuis  
Hôtel Le Roberval  
Hôtel Le Saint-André  
Hôtel Les Suites Labelle  
Hôtel Lord Berri  
Hôtel Manoir des Alpes  
Hôtel St-Denis  
Hôtel Stay  
Hôtel Viger  
Berri-UQAM métro station
- 10** Auberge Le Pomerol  
Hôtel de l'Institut (ITHQ)  
Hôtel de Paris  
Hôtel Élégant  
Hôtel Européenne  
Hôtel La Résidence du Voyageur  
Hôtel Montréal Centrale  
Hôtel Quartier Latin  
Loft Hôtel  
Montréal Espace Confort
- 11**

## FROM THE AIRPORT TO DOWNTOWN MONTRÉAL AT ANY TIME

24 hours / day • 7 days / week

- Accessible service
- Free access in many buses
- Travel times will vary from 45 to 60 minutes according to traffic conditions.

STARTING JANUARY 6, 2014



# 747

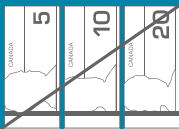
## P.-E.-TRUDEAU AIRPORT/ DOWNTOWN



### FARE CARDS ARE SOLD

- in every métro station
- at the airport (international arrivals level)
- Gare d'autocars de Montréal (central bus terminal)

# \$10



**EXACT CHANGE.  
COINS ONLY.**

Pass valid for 24 hours on all  
STM bus and métro lines.

## ACCEPTED FARE CARDS

1-day - Unlimited weekend - 3-day

---

Weekly CAM hebdo

---

4-month CAM

---

Monthly CAM

---

Monthly TRAM 1 to 8

---

When travelling to airport, 747 bus tickets  
purchased from Stationnement de Montréal  
pay stations are also accepted

The Family Outings program and « Bring a  
friend » privilege for Maestro members do  
not apply to travel aboard the 747 bus.

